

Name: _____

Operator and Patient Positioning Worksheet

Task: Watch the videos and answer the following questions as you go along.

Patient Positioning

1. Lay the patient back in the chair and have their head even with the headrest.
2. Adjust the patient's headrest so it hugs the the occipital region of the head.

Maxillary Arch

Patients feet should be even with their nose.

The back of the patients chair should almost be _____ with the floor.

Patient should be in a chin _____ position.

Mandibular Arch

Raise the back of the patient chair so its at a _____ degree angle from the floor.

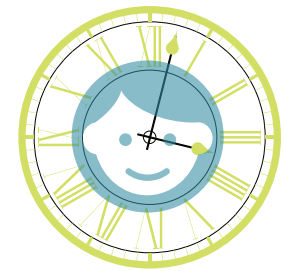
Adjust the patients headrest so the patient is in a chin _____ position.

Operator Clock Positions

Steps for Using the Clock Positions

Note: You only need to fill in the blank for question #2. This is just to help you remember what to do.

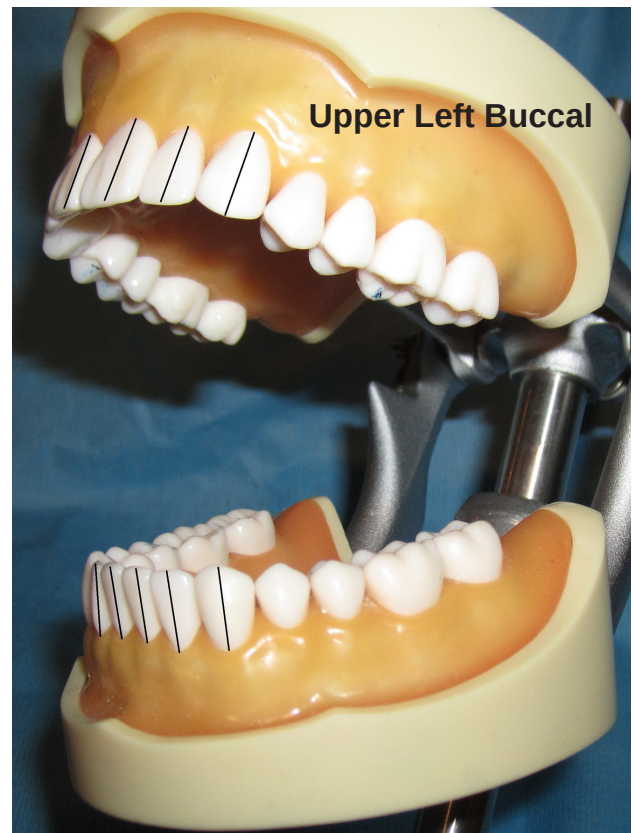
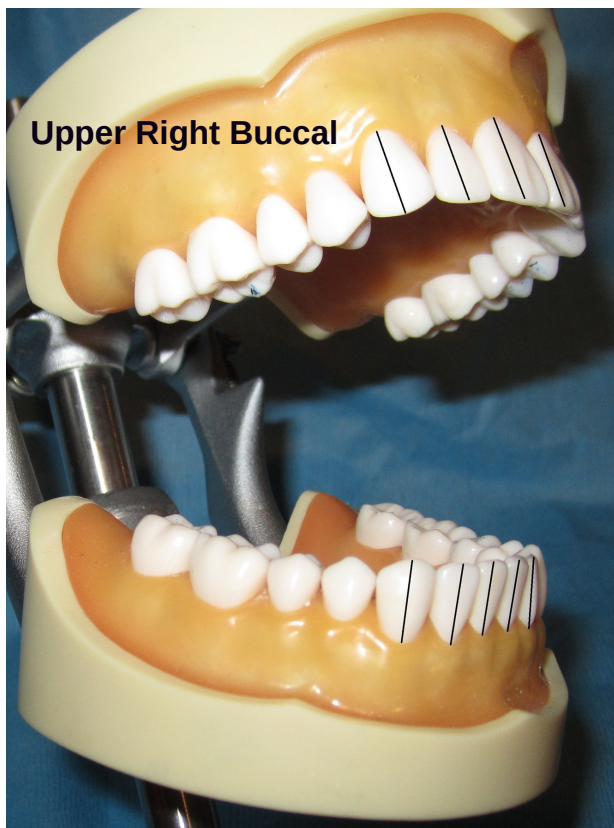
1. picture your patients face like a clock 12:00 being the top of their head.
2. Find home base: right handed operators that is _____ o'clock and left handed operator that is _____ o'clock.
3. Identify your towards and away surface.
4. Once we identified the towards and away surfaces then you can figure out where to sit when your working in that area.



Highlight the toward surfaces for the anterior teeth. If your right handed only highlight for a right-handed operator; if your left handed only highlight for a left-handed operator. Hint: make sure you're remembering to sit in your home base.



Highlight in each quadrant the toward surfaces for the posterior teeth. If your right-handed only highlight for a right-handed operator; if your left-handed only highlight for a left-handed operator.



Task: Write what clock position you would use in each of the areas underlined in red. Use clock positions for the right handed operator if your right handed. Use the clock position for the left handed operator if your left handed. Hint: look at your typodont when trying to figure the clock position. Always go to your home base to see if the surface is towards or away.

right side

left side

